

Made in polyglass polyester material reinforced with fiberglass, red colour. The DB/P insulators types, absolutely unbreakable, with high mechanical and electrical characteristics, can be used even under precarious working conditions (high room temperature, in the presence of corrosive substance, etc.). The central layer sides ease the insulators gripping and locking of.

On request we can supply the spacing insulators with :

- 1 or 2 male connections type "AM" set and locked with loctite

Fabriqués en «polyverre» résine de polyester renforcé de fibres de verre de couleur rouge.

Les isolateurs DB/P sont incassables. Les caractéristiques électriques et mécaniques sont particulièrement indiquées pour les conditions ambiantes sévères (température, agent corrosifs, vibrations, etc.). La partie centrale facilite l'agrippement et le serrage.

Sur demande nous pouvons fournir des isolateurs avec :

- 1 ou 2 inserts mâles - ref AM, visser et coller avec de la Loctite.

Vervaardigd uit «polyglas» polyester met glasvezelversterking in rode kleur. De DB/P isolatoren zijn onbreekbaar. De elektrische en mechanische eigenschappen zijn aangewezen bij uiterst zware gebruiksomstandigheden (hoge temperatuur, agressieve omgeving, trillingen, etc.).

Het centrale gedeelte vergemakelijkt het grijpen en het vastschroeven.

Op aanvraag kunnen wij isolatoren leveren met :

- 1 of 2 draadstangen - ref AM, geschroefd en bevestigd met Loctite.

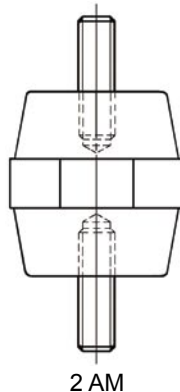
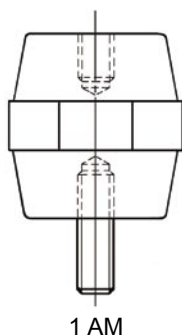
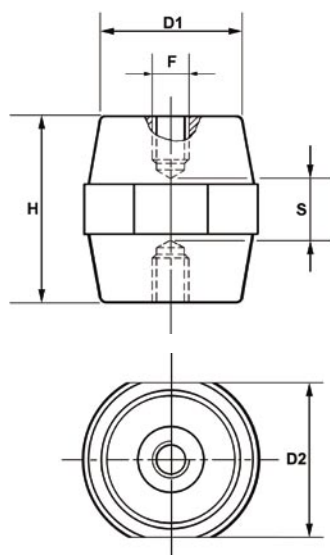
Art.	Surface flashover Surcharge /surface Overbelasting opp.	Intern. flashover Surcharge intern. Inwend. overbelast.	Tensile stress Traction Trek.	Cantilever stress Flexion Buiging	Comp. stress Compression Druk	Twist. stress Torsion Torsie
	kV (A.C.)	kV (A.C.)	DN	DN	DN	DN x m
DB 16/P	3	8	100	50	500	0,4
DB 20/P	4	15	150	60	600	0,4
DB 25/P	7	20	300	180	2100	3
DB 30/P	8	23	500	250	4400	3
DB 34/P	10	30	800	450	6500	5
DB 35/P	10	30	1100	800	8000	9
DB 45/P	12	40	1200	800	8000	10
DB 50/P	12	40	850	450	6800	6
DB 65/P	15	40	1500	700	8300	6
DB 75/P	25	50	2300	900	10000	10
DB750/P	25	50	2800	1500	15000	13

Insulators Isolateurs Isolatoren **DB/P**

Operating Temperature Température d'utilisation Gebruikstemperatuur	-40°C +130°C
Fire Reaction Tenue au feu Vuurbestendigheid	Class UL94-VO
Breaking charge Charge de rupture Breukweerstand	Tolerance +- 10 %
Water absorbion Absorption d'eau Wateropname	< 0,2 %

1 DN = ~ 1 Kg

Color Couleur Kleur	Art.	F	H mm	D1 mm	D2 mm	S mm	Service Voltage	Pack. Emb. verpak
●	DB 12/P	M3 - M4	12	10	11	3	220 V	100
●	DB 16/P	M3 - M4	16	13	14	6	380 V	100
●	DB 20/P	M4 - M6	20	15	17	8	500 V	100
●	DB 25/P	M5 - M6	25,2	15	19	9	600 V	250
●	DB 30/P	M6 - M8	30	26	30	10	600 V	80
●	DB 34/P	M6 - M8 - M10	35	28	32	10	1000 V	64
●	DB 35/P	M6 - M8 - M10	35,5	35	41	10	1000 V	36
●	DB 45/P	M6 - M8 - M10 - M12	45	35	41	15	1500 V	27
●	DB 50/P	M6 - M8 - M10	51	29	36	20	2000 V	36
●	DB 65/P	M6 - M8 - M10 - M12	63,5	35	41	30	3000 V	22
●	DB 75/P	M8 - M10 - M12	76	36	50	25	5000 V	12
●	DB 750/P	M10 - M12 - M16	75	52	65	25	5000 V	8



Polyester

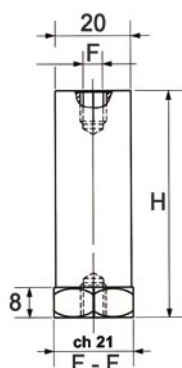
Spacing insulators made in polyglass polyester material reinforced with fiberglass, red colour. On request we can supply the spacing insulators with 1 or 2 male connections type «AM».

Séparateurs isolants fabriqués en polyverre, polyester renforcé de fibres de verre de couleur rouge. Sur demande nous pouvons fournir des isolateurs avec 1 ou 2 inserts mâles – ref AM.

Spatieisolatoren vervaardigd uit polyglas polyester met glasvezelversterking in rode kleur.

Op aanvraag kunnen wij isolatoren leveren met 1 of 2 draadstangen - ref AM.

CO/P

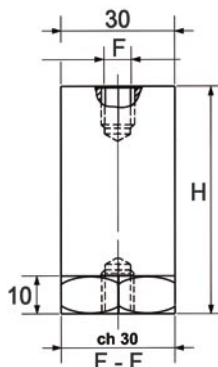


Operating Temperature Température d'utilisation Gebruikstemperatuur	-40°C +130°C
Fire Reaction Tenue au feu Vuurbestendigheid	Class UL94-VO
Breaking charge Charge de rupture Breukweerstand	Tolerance +/- 10 %

Art.	F	H	Tension
CO/P 16	M4 - M5 - M6	16 mm	220 V
CO/P 20	M4 - M5 - M6 - M8	20 mm	400 V
CO/P 25	M5 - M6 - M8	25 mm	500 V
CO/P 30	M5 - M6 - M8	30 mm	600 V
CO/P 35	M5 - M6 - M8	35 mm	600 V
CO/P 40	M6 - M8	40 mm	600 V
CO/P 45	M6 - M8	45 mm	750 V
CO/P 50	M6 - M8	50 mm	750 V
CO/P 60	M6 - M8	60 mm	750 V

Art.	Surface flashover Surcharge /surface Overbelasting opp.	Intern. flashover Surcharge intern. Inwend. overbelast.	Tensile stress Traction Trek.	Cantilever stress Flexion Buiging	Comp. stress Compression Druk	Twist. stress Torsion Torsie
	kV (A.C.)	kV (A.C.)	DN	DN	DN	DN x m
CO/P 30	5	15	400	200	2100	1-2
CO/P 40	8	20	400	150	2100	1-2
CO/P 50	10	25	400	100	2100	1-2
CO/P 60	10	30	400	100	2100	1-2

CS/P

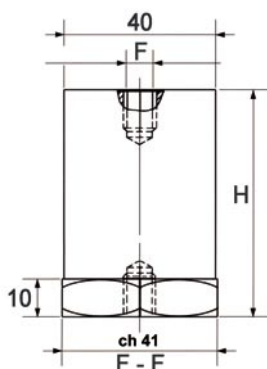


Operating Temperature Température d'utilisation Gebruikstemperatuur	-40°C +130°C
Fire Reaction Tenue au feu Vuurbestendigheid	Class UL94-VO
Breaking charge Charge de rupture Breukweerstand	Tolerance +/- 10 %

Art.	F	H	Tension
CS/P 30	M6 - M8 - M10	30 mm	750 V
CS/P 35	M6 - M8 - M10	35 mm	1000 V
CS/P 40	M6 - M8 - M10	40 mm	1000 V
CS/P 45	M6 - M8 - M10	45 mm	1000 V
CS/P 50	M6 - M8 - M10	50 mm	1500 V
CS/P 55	M6 - M8 - M10	55 mm	1500 V
CS/P 60	M6 - M8 - M10	60 mm	1500 V
CS/P 65	M6 - M8 - M10	65 mm	1500 V
CS/P 70	M6 - M8 - M10	70 mm	1500 V

Art.	Surface flashover Surcharge /surface Overbelasting opp.	Intern. flashover Surcharge intern. Inwend. overbelast.	Tensile stress Traction Trek.	Cantilever stress Flexion Buiging	Comp. stress Compression Druk	Twist. stress Torsion Torsie
	kV (A.C.)	kV (A.C.)	DN	DN	DN	DN x m
CS/P 30	8	20	900	450	4000	1,3 - 2,6
CS/P 40	8	25	900	300	4000	1,3 - 2,6
CS/P 50	10	35	900	200	4000	1,3 - 2,6
CS/P 60	15	35	900	150	4000	1,3 - 2,6

CT/P

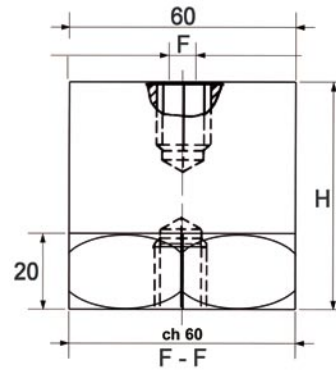


Operating Temperature Température d'utilisation Gebruikstemperatuur	-40°C +130°C
Fire Reaction Tenue au feu Vuurbestendigheid	Class UL94-VO
Breaking charge Charge de rupture Breukweerstand	Tolerance +/- 10 %

Art.	F	H	Tension
CT/P 30	M8 - M10	30 mm	750 V
CT/P 35	M8 - M10	35 mm	750 V
CT/P 40	M8 - M10	40 mm	1000 V
CT/P 45	M8 - M10	45 mm	1000 V
CT/P 50	M8 - M10	50 mm	1500 V
CT/P 55	M8 - M10	55 mm	1500 V
CT/P 60	M8 - M10	60 mm	1500 V
CT/P 65	M8 - M10	65 mm	1500 V
CT/P 70	M8 - M10	70 mm	1500 V
CT/P 80	M8 - M10	80 mm	1500 V

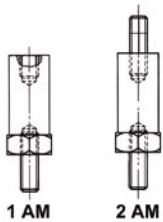
Art.	Surface flashover Surcharge /surface Overbelasting opp.	Intern. flashover Surcharge intern. Inwend. overbelast.	Tensile stress Traction Trek.	Cantilever stress Flexion Buiging	Comp. stress Compression Druk	Twist. stress Torsion Torsie
	kV (A.C.)	kV (A.C.)	DN	DN	DN	DN x m
CT/P 30	8	20	1000	750	8000	3 - 6
CT/P 40	10	25	1000	750	8000	3 - 6
CT/P 50	10	35	1000	750	8000	3 - 6
CT/P 60	10	35	1000	750	8000	3 - 6

Art.	F	H	Tension
CPE 40	M10 – M12 – M16	40 mm	1500 V
CPE 50	M10 – M12 – M16	50 mm	3000 V
CPE 60	M10 – M12 – M16	60 mm	3000 V
CPE 70	M10 – M12 – M16	70 mm	4000 V
CPE 80	M10 – M12 – M16	80 mm	5000 V
CPE 100	M10 – M12 – M16	100 mm	8000 V



TYPE	Surface flashover Surcharge /surface Overbelasting opp.	Intern. flashover Surcharge intern. Inwend. overbelast.	Tensile stress Traction Trek.	Cantilever stress Flexion Buiging	Comp. stress Compression Druk	Twist. stress Torsion Torsie
	kV (A.C.)	kV (A.C.)	DN	DN	DN	DN x m
CPE 40	10	25	1100	700	10000	6
CPE 60	20	50	1500	600	10000	8
CPE 80	25	50	2300	900	12000	10
CPE 100	30	50	3000	1500	15000	15

Operating Temperature Température d'utilisation Gebruikstemperatuur	-40°C +130°C
Fire Reaction Tenue au feu Vuurbestendigheid	Class UL94-VO
Breaking charges Charge de rupture Breukweerstand	Tolerance +- 10 %

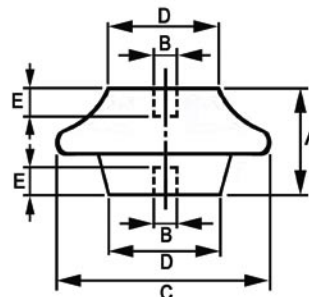
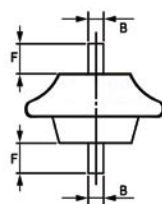
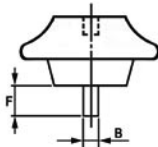
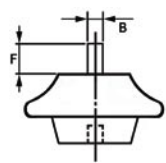


G5x20	G8x22	G10x30	G12x30
G6x20	G8x33	G10x40	G16x30
G6x30	G8x50	G10x50	
G8x15	G10x22	G12x25	



GR 12/10
GR 16/10
GR 16/12
GR 8/12

Others on request / Autres sur demande / Andere op aanvraag



Art.	A	B	C	D	E	F	Tension
I2IC1000-10	52	M8	100	50	15	25	5000 V
I2IC1000-10	52	M10	100	50	15	25	5000 V
I2IC1000-12	52	M12	100	50	16	30	5000 V
I2IC1000-16	52	M16	100	50	16	30	5000 V

TYPE	Surface flashover Surcharge /surface Overbelasting opp.	Intern. flashover Surcharge intern. Inwend. overbelast.	Tensile stress Traction Trek.	Cantilever stress Flexion Buiging	Comp. stress Compression Druk	Twist. stress Torsion Torsie
	kV (A.C.)	kV (A.C.)	DN	DN	DN	DN x m
I2IC1000	50	50	1950	980	14700	10

Operating Temperature Température d'utilisation Gebruikstemperatuur	-40°C +130°C
Fire Reaction Tenue au feu Vuurbestendigheid	Class UL94-VO
Breaking charge Charge de rupture Breukweerstand	Tolerance +- 10 %